

ROBOTICS

Product manual, spare parts

IRB 365



Trace back information:
Workspace 23A version a6
Checked in 2023-03-06
Skribenta version 5.5.019

Product manual, spare parts

IRB 365-1.5/800

IRB 365-1.5/1100

IRB 365-1.5/1300

OmniCore

Document ID: 3HAC083099-001

Revision: C

The information in this manual is subject to change without notice and should not be construed as a commitment by ABB. ABB assumes no responsibility for any errors that may appear in this manual.

Except as may be expressly stated anywhere in this manual, nothing herein shall be construed as any kind of guarantee or warranty by ABB for losses, damage to persons or property, fitness for a specific purpose or the like.

In no event shall ABB be liable for incidental or consequential damages arising from use of this manual and products described herein.

This manual and parts thereof must not be reproduced or copied without ABB's written permission.

Keep for future reference.

Additional copies of this manual may be obtained from ABB.

Original instructions.

© Copyright 2022-2023 ABB. All rights reserved.
Specifications subject to change without notice.

Table of contents

Overview of this manual	7
1 Definition of spare part levels	9
2 Mechanical unit	11
3 Motor units	15
4 Electrical parts	17
4.1 Manipulator harness kit	17
4.2 Brake release unit	18
4.3 SMB and BU box	19
5 Calibration tools	21
6 Labels	23
7 Consumables and wear parts	25
7.1 Consumables	25
7.2 Wear parts	26

This page is intentionally left blank

Overview of this manual

About this manual

This manual contains spare parts for:

- IRB 365 and all its variants.

Usage

This manual shall be used as a complement to the product manual for IRB 365 during:

- maintenance work
- repair work.

Who should read this manual?

This manual is intended for:

- maintenance personnel
- repair personnel.

Prerequisites

Maintenance/repair/installation personnel working with an ABB Robot must:

- be trained by ABB and have the required knowledge of mechanical and electrical installation/repair/maintenance work.

References

Documentation referred to in the manual, is listed in the table below.



Tip

All documents can be found via myABB Business Portal, www.abb.com/myABB.

Document name	Document ID
<i>Product manual - IRB 365</i>	3HAC079185-001
<i>Circuit diagram - IRB 365</i>	3HAC079349-003

Revisions

Revision	Description
A	First edition.
B	Published in release 22C. The following updates are done in this revision: <ul style="list-style-type: none"> • Removed manipulator variant IRB 365H 3/1100 from the manual. • Corrected spare part number for gearbox and changed gearbox names. • Removed lower universal joint from spare part list and adjusted illustrations accordingly. • Removed incorrect lubricants from consumable list.
C	Published in release 23A. The following updates are done in this revision: <ul style="list-style-type: none"> • Added IRB 365-1.5/800 and IRB 365-1.5/1300. • The section <i>Base kit</i> is renamed to <i>Mechanical unit</i>.

This page is intentionally left blank

1 Definition of spare part levels

Spare part level

ABB spare parts are categorized into two levels, L1 and L2. Always check the part level before conducting a service work on a spare part.

- L1 spare parts

The L1 parts can be replaced in the field. The maintenance and replacement instructions given in the related product manuals must be strictly followed. If there are any problems, contact your local ABB for support.

- L2 spare parts

To replace the L2 parts require specialized training and might need special tools. Only ABB field service personnel or qualified personnel trained by ABB can replace L2 parts.

This page is intentionally left blank

2 Mechanical unit

Spare part list

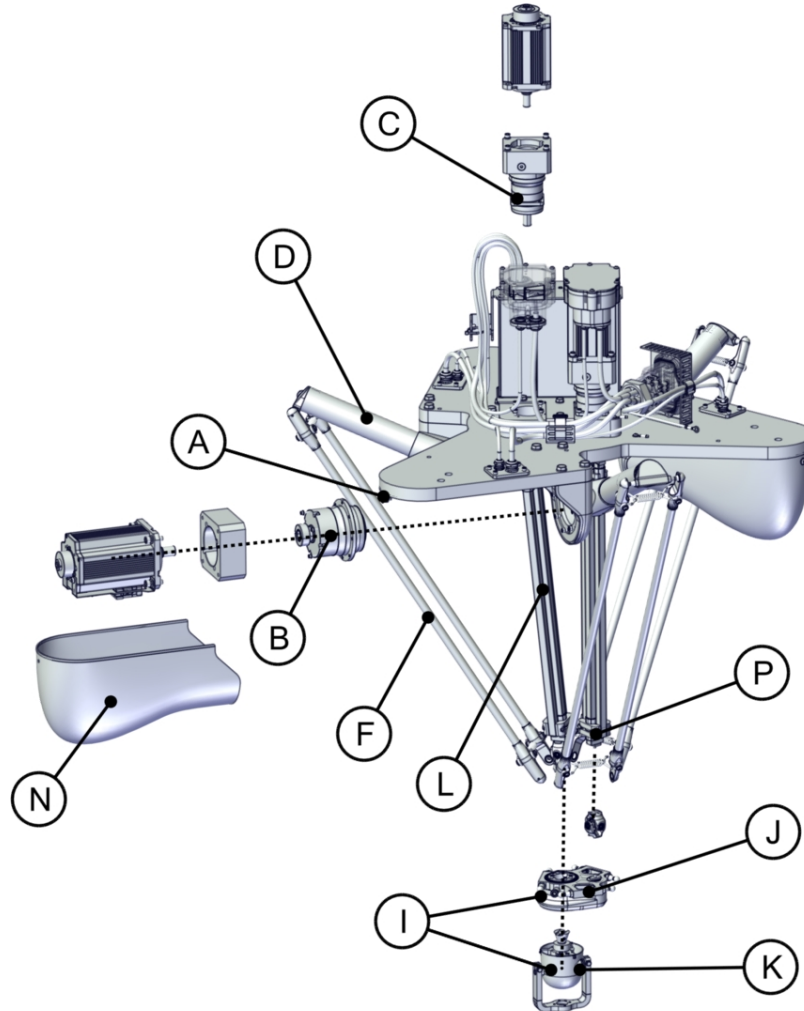
	Spare part	Article number	Note	Level
A	Bracket	3HAC080337-001		L1
B	Gearbox with adapter plate	3HAC080023-001		L1
C	Gearbox with adapter plate	3HAC083873-001		L1
D	Upper arm	IRB 365-1.5/800 and IRB 365 1.5/1100: 3HAC079964-001 IRB 365-1.5/1300: 3HAC084333-001		L1
E	Ball joint	3HAC079978-001		L1
F	Lower arm	IRB 365-1.5/800: 3HAC084339-001 IRB 365 1.5/1100: 3HAC079965-001 IRB 365-1.5/1300: 3HAC084334-001		L1
G	Ball bearing cup	3HAC079967-001		L1
H	Spring unit	3HAC079966-001		L1
I	Delta unit	3HAC080338-001		L1
J	Delta house	3HAC080339-001		L1
K	Axis-5 house	3HAC080341-001		L1
L	Telescope unit	IRB 365-1.5/800: 3HAC084342-001 IRB 365 1.5/1100: 3HAC079972-001 IRB 365-1.5/1300: 3HAC084336-001		L1
M	Slide bearing	3HAC079975-001		L1
N	Motor Cover	3HAC079977-001		L1

Continues on next page

2 Mechanical unit

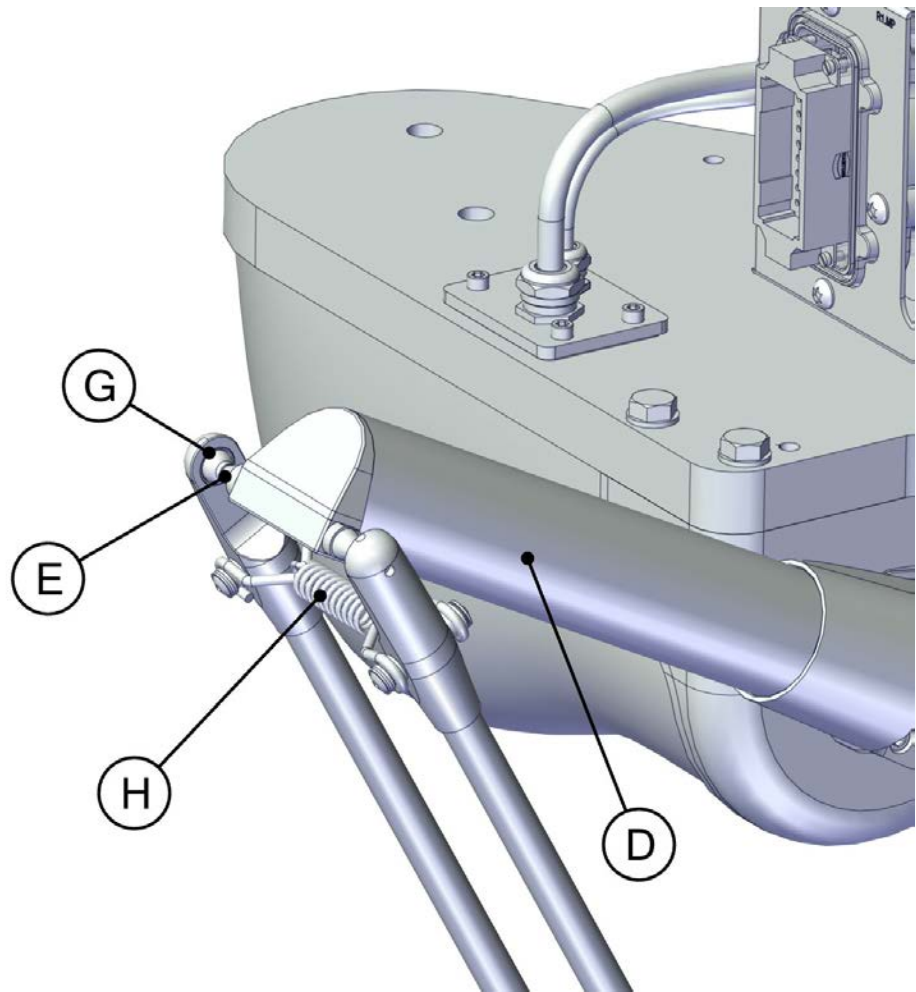
Continued

Spare part illustration



xx2200000374

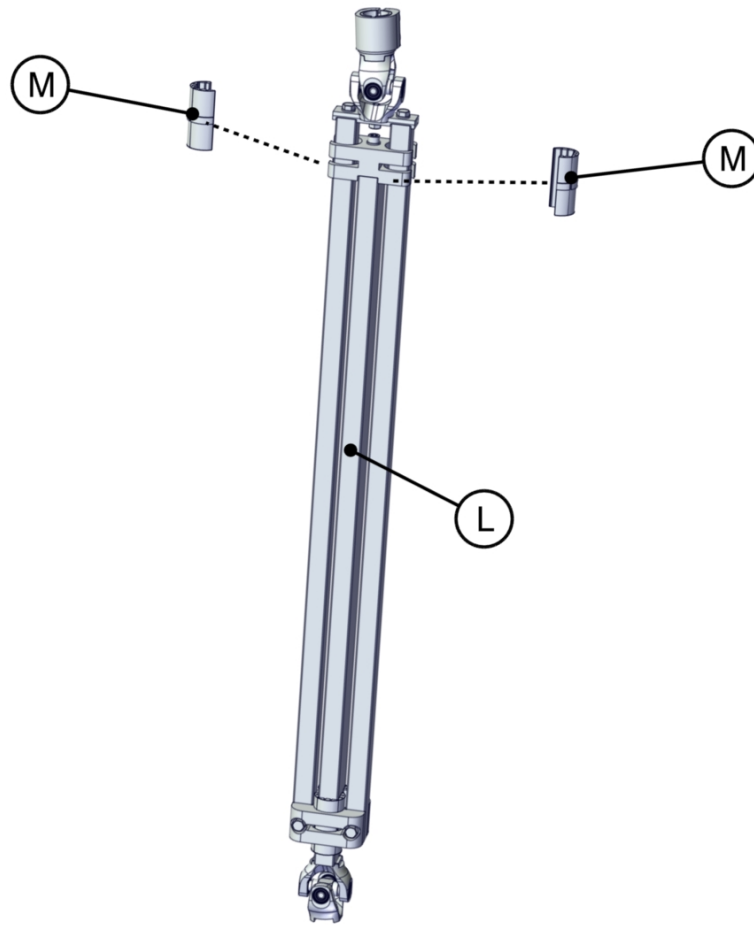
Continues on next page



xx220000375

2 Mechanical unit

Continued



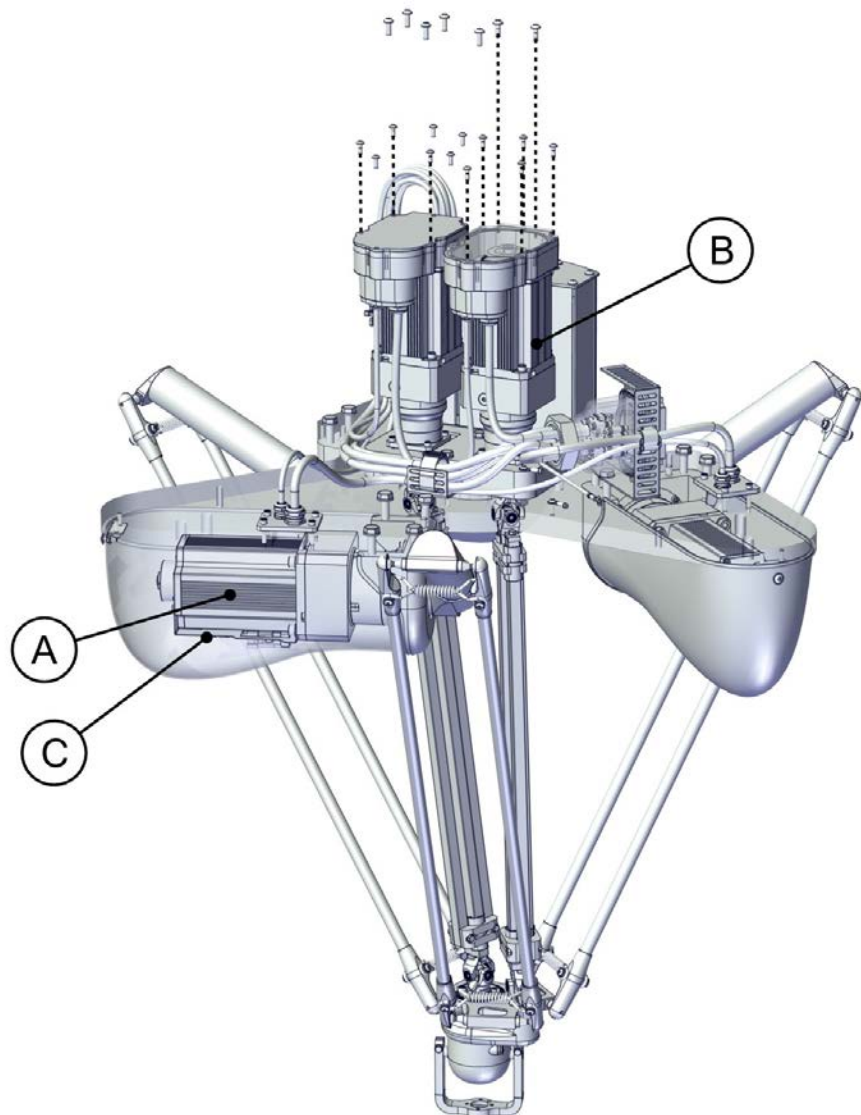
xx220000381

3 Motor units

Spare part list

	Spare part	Article number	Note	Level
A	Rot AC Motor M105.1 w. adapter	3HAC079982-002		L1
B	Rot AC motor M104 w. adapter	3HAC078682-003		L1
C	Connector bracket	3HAC079785-001		L1

Spare part illustration



xx2200000376

This page is intentionally left blank

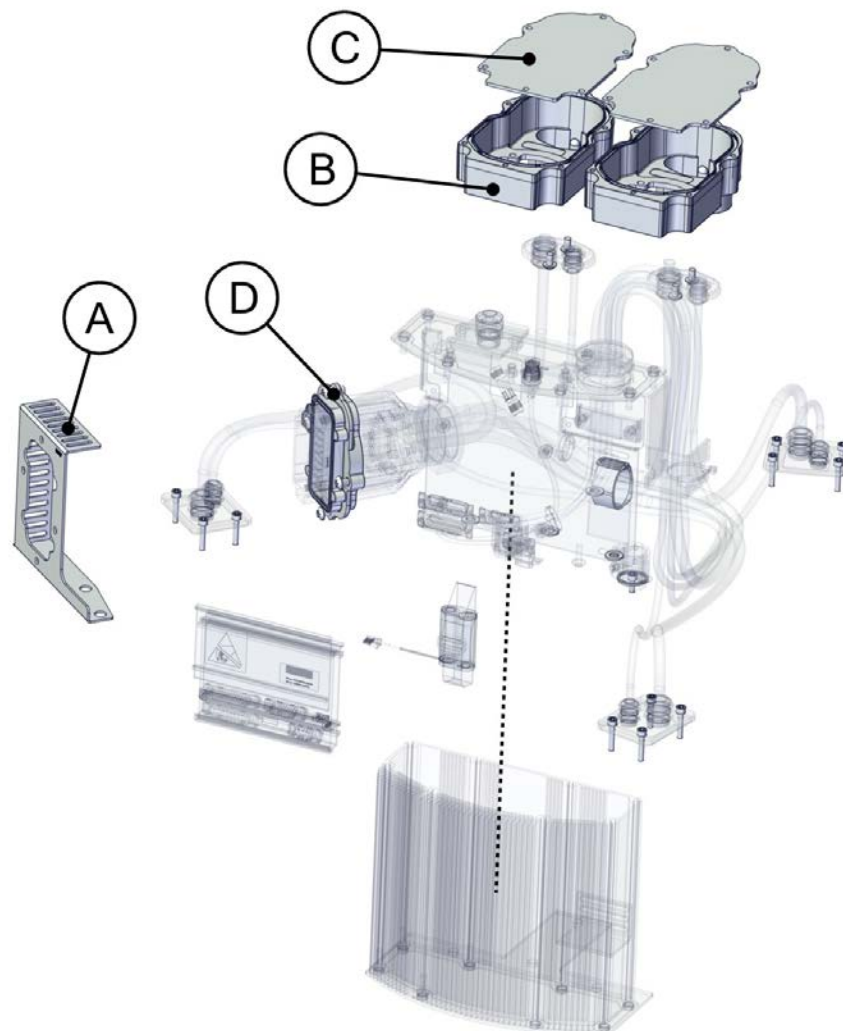
4 Electrical parts

4.1 Manipulator harness kit

Spare part list

	Spare part	Article number	Note	Level
A	Mp holder	3HAC079342-001		L1
B	Connection box FS110	3HAC057142-001		L1
C	Cover	3HAC033590-001		L1
D	Adapter unit	3HAC11774-3		L1

Spare part illustration



xx220000377

4 Electrical parts

4.2 Brake release unit

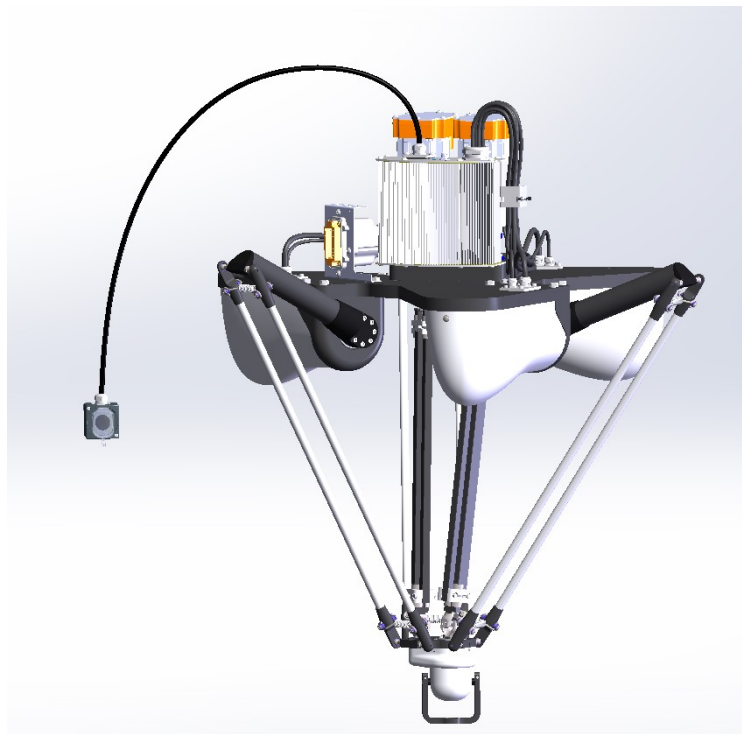
4.2 Brake release unit

Spare part list

	Spare part	Article number	Note	Level
A	Brake release unit	3HAC077658-001		L2

Spare part illustration

Brake release unit assembled to SMB



xx2100002498

4.3 SMB and BU box

Spare part list

	Spare part	Article number	Note	Level
A	Manipulator harness	3HAC079222-001		L1
B	SMB unit	3HAC044168-001		L1
C	Battery unit	3HAC044075-001	Battery includes protection circuits. Only replace with the specified spare part or an ABB-approved equivalent.	L1
D	SMB BU box	3HAC024063-001		L1
E	SMB BU Cover	3HAC079339-001		L1
F	Strap Velcro	3HAC12625-1		L1

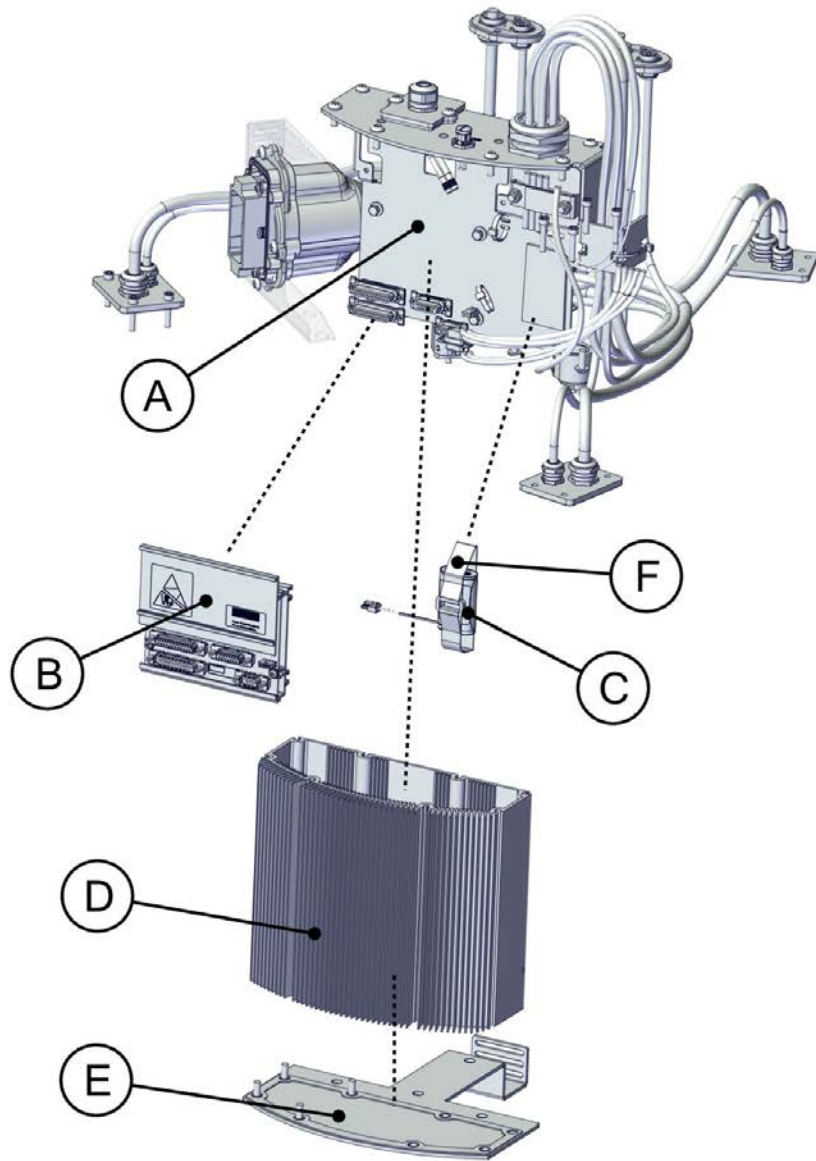
Continues on next page

4 Electrical parts

4.3 SMB and BU box

Continued

Spare part illustration



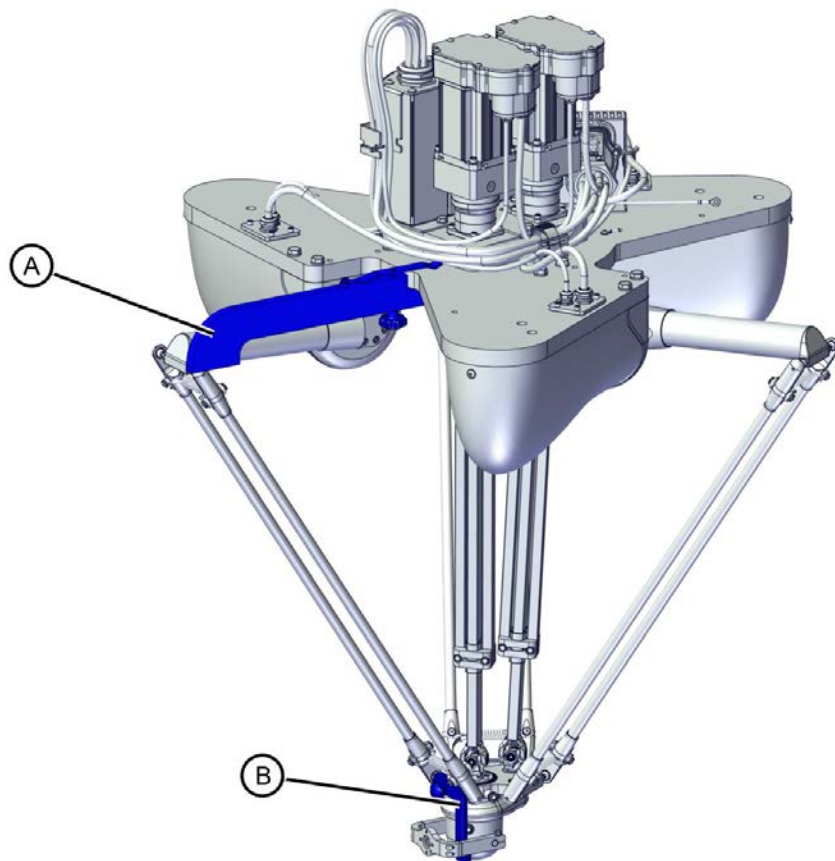
xx220000442

5 Calibration tools

Spare part list

	Spare part	Article number	Note	Level
A	Calibration tool	IRB 365-1.5/800 and IRB 365 1.5/1100: 3HAC081390-001 IRB 365-1.5/1300: 3HAC084354-001	Used when calibrating axis 1-3	L1
B	Calibration tool	3HAC081391-001	Used when calibrating axis 4-5	L1

Spare part illustration



xx220000382

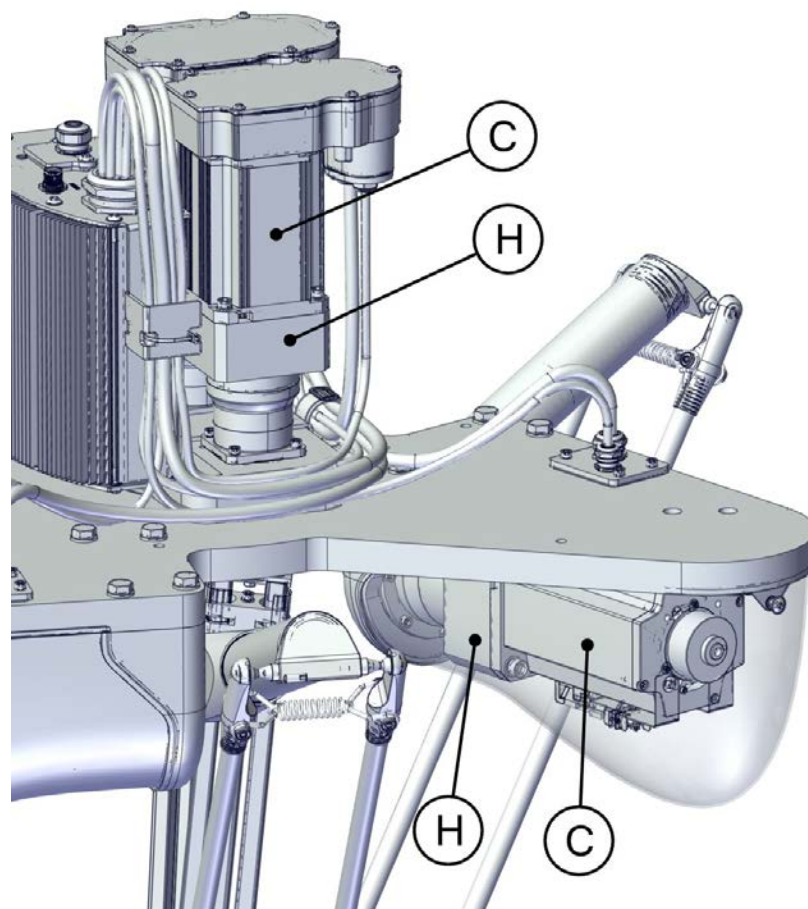
This page is intentionally left blank

6 Labels

Spare part list

	Spare part	Article number	Note	Level
A	ABB logo type FDA	3HAC077213-001	Not delivered assembled	L1
B	Instruction label	3HAC075336-001	Not delivered assembled	L1
C	Warning sign	3HAC075337-001		L1
D	Axis marks	3HAC040066-001	Not delivered assembled	L1
E	Axis marks	3HAC076731-001	Not delivered assembled	L1
F	Battery label FDA	3HAC077212-001	Not delivered assembled	L1
G	Label flex picker red	3HAC4633-1	Not delivered assembled	L1
H	Label hot surface	3HAC076469-001		L1
I	Instruction plate	3HAC081369-001	Not delivered assembled	L1

Spare part illustration



xx2200000378

This page is intentionally left blank

7 Consumables and wear parts

7.1 Consumables

Consumables list

This table specifies required lubricants for installation and service. Detailed information about usage of lubricants is found in the product manual.

Description	Spare part number
Trans clear	3HAC073510-002

7 Consumables and wear parts

7.2 Wear parts

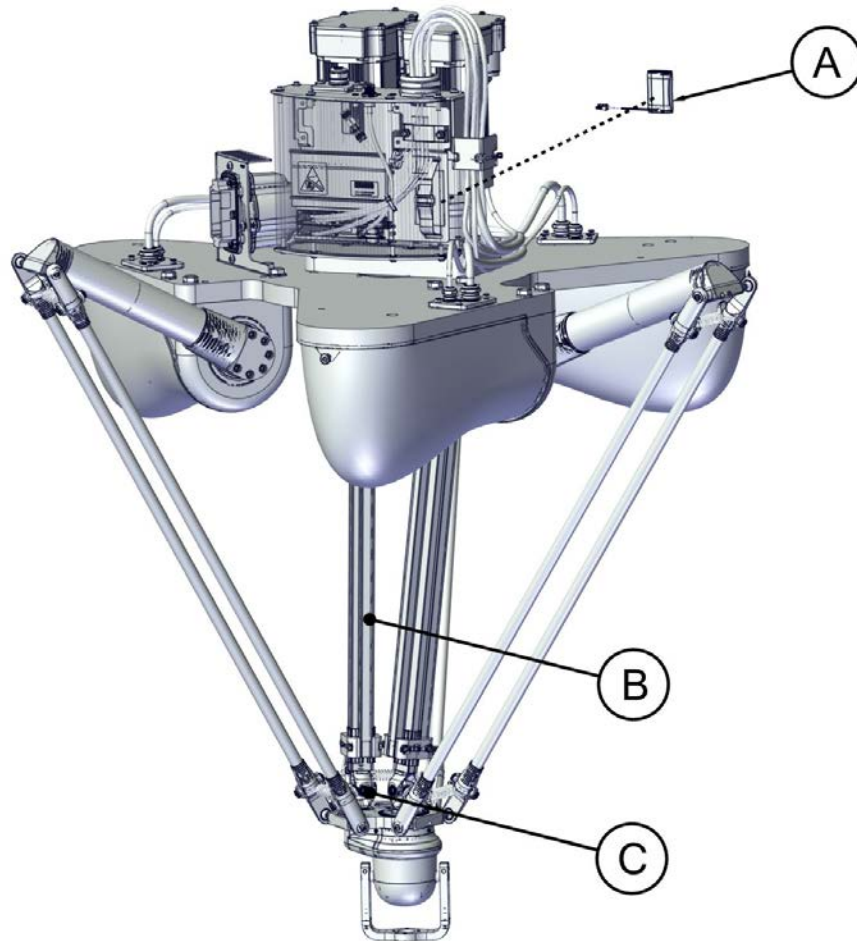
7.2 Wear parts

Wear part list

Expected component life of following wear parts are specified in the product manual.

	Description	Spare part number
A	Battery Unit	3HAC044075-001
B	Telescope unit	3HAC079972-001
C	Universal joint	3HAC080342-001

Wear part illustration



xx220000443



ABB AB

Robotics & Discrete Automation

S-721 68 VÄSTERÅS, Sweden

Telephone +46 (0) 21 344 400

ABB AS

Robotics & Discrete Automation

Nordlysvegen 7, N-4340 BRYNE, Norway

Box 265, N-4349 BRYNE, Norway

Telephone: +47 22 87 2000

ABB Engineering (Shanghai) Ltd.

Robotics & Discrete Automation

No. 4528 Kangxin Highway

PuDong New District

SHANGHAI 201319, China

Telephone: +86 21 6105 6666

ABB Inc.

Robotics & Discrete Automation

1250 Brown Road

Auburn Hills, MI 48326

USA

Telephone: +1 248 391 9000

abb.com/robotics